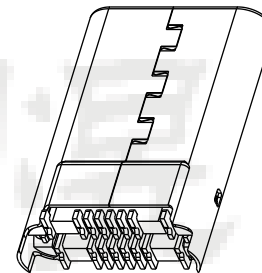
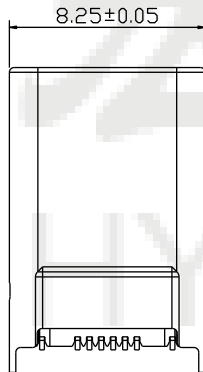
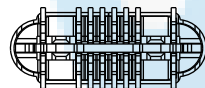
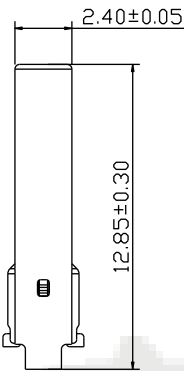
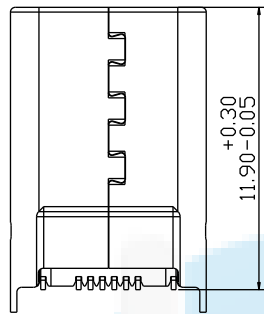


ROHS
Compatible



备注:

1.原材料

- 1.1 塑胶材质: LCP+30%GF 94V-0 黑色
- 1.2 端子材质: C2680
- 1.3 卡钩材质: SUS 201
- 1.4 壳子材质: SUS 201

2.机械性能:

- 2.1 插入力:6~20N.插拔10000次后5-20N.
- 2.2 拔出力:8~20N.插拔10000次后6-20N.
- 2.3 耐久寿命10000 CYCLES.

3.电气性能:

- 3.1 额定电流:3A MAX.
- 3.2 额定电压:20V MAX.
- 3.3 耐电压:100V AC.
- 3.4 接触阻抗:40mΩ MAX(Initial), 50mΩ MAX(10000次试验后).
- 3.5 绝缘阻抗:100MΩ MIN.

4.电镀规格:

- 4.1 端子: 镀底40u"Min 接触点镀金G/F" 焊接收镀锡20-40U"
- 4.2 外壳: 亮镍 表面镀镍40u"Min 盐雾24H
- 4.3 卡钩: 素材

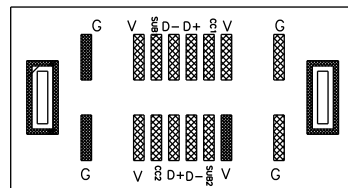
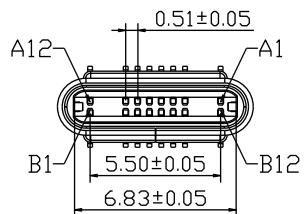
5.环境温度: 温度范围:-30°C ~ +85°C.

6.包装方式: 1: PC盒装 1000PCS/袋

2: 载带包装500PCS/卷

7.环保要求: ROHS REACH

U5 380- 16P x 11.9L
↓ ↓ ↓ ↓ ↓
名称 流水号 PIN位 E;公头 L;长度



PCB

PIN ASSIGNMENT:

PIN NO.	A12	A11	A10	A9	A8	A7	A6	A5	A4	A3	A2	A1
Signal Name	GND	RX2+	RX2-	VBUS	SBU1	D-	D+	CC	VBUS	TX1-	TX1+	GND
PIN NO.	GND	TX2+	TX2-	VBUS	Vconn			SBU2	VBUS	RX1-	RX1+	GND
Signal Name	B1	B2	B3	B4	B5	B6	B7	B8	B9	B10	B11	B12

DESIGN	Li Jinwei	SC ALL	
DRAWING	Wu Qifa	UNIT	mm
CHECK	Zheng Jinxian	SIZE	A4: 210 * 297
APPROVAL	Liu Xiaohong	DATE	2020-06-10

TOLERANCE	
X.X ±0.30	X.°±2°
.XX ±0.20	.X°±1°
.XXX ±0.10	.XX°±0.5°

DRAWG NO.	U5380-16PE11.9L
TITLE:	公头16P 立式两脚插板SMT 11.9L

东莞市宏煜盛实业有限公司
Dongguan hongyusheng Industry Co., Ltd
TEL: 0769-81230179 <https://www.hystypec.com>