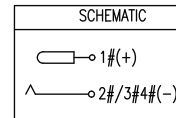
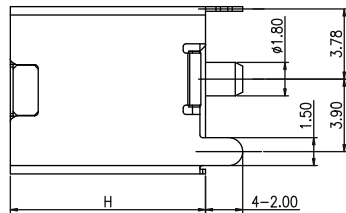
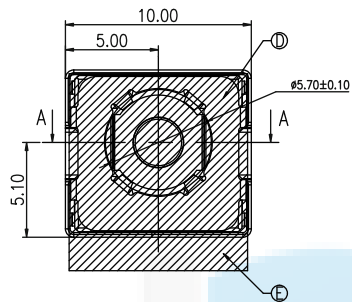
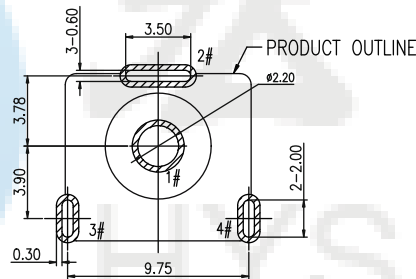
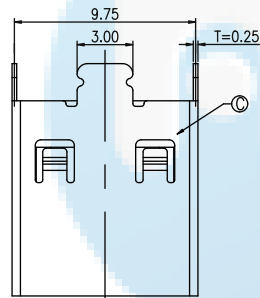


**ROHS**  
Compatible

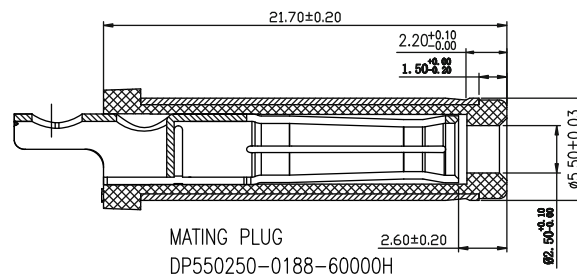
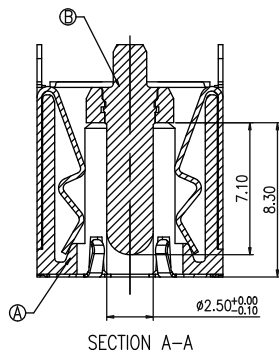
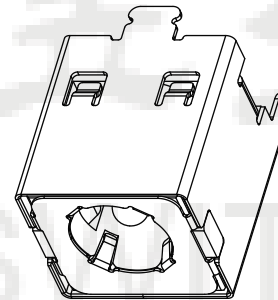


SPECIFICATION:

- RATING: DC 20V 20A
- CONTACT RESISTANCE:  
30mΩ MAX.(INITIAL)  
50mΩ MAX.(FINAL)
- INSULATION RESISTANCE: 100 MΩ MIN.
- WITHSTAND VOLTAGE: 500 VAC
- INSERTION FORCE: 3N~30N
- EXTRACTION FORCE: 3N~30N
- DURABILITY: 5,000 CYCLES



RECOMMENDED PCB LAYOUT  
TOP VIEW TOLERANCE: ±0.05



型号(X)	高度(H)
1073	10.5mm
1074	11.6mm
1075	12.6mm
1076	13.0mm
1077	14.0mm
1078	15.0mm
1079	16.3mm
1080	17.5mm

NO.	DESCRIPTION	MATERIAL	REMARKS	QTY
E	MYLAR			1
D	GROUND	SUS 304		1
C	SHELL	COPPER ALLOY	Ni 40u"MIN.	1
B	CENTER PIN	BRASS	GOLD FLASH/Ni 40u" MIN.	1
A	HOUSING	HIGH TEMP.THERMOPLASTIC	BLACK	1

DESIGN	Li Jinwei	SCALL	
DRAWING	Wu Qifa	UNIT	mm
CHECK	Zheng Jinxian	SIZE	A4: 210 * 297
APPROVAL	Liu Xiaohong	DATE	2020-06-10

TOLERANCE	
X.X ±0.30	X.°±2°
.XX ±0.20	.X°±1°
.XXX ±0.10	.XX°±0.5°

DRAWG NO.	HYS-DC-5525-XH
TITLE:	DC电源插座系列



**东莞市宏煜盛实业有限公司**  
Dongguan hongyusheng Industry Co., Ltd  
TEL: 0769-81230179 <https://www.hystypec.com>