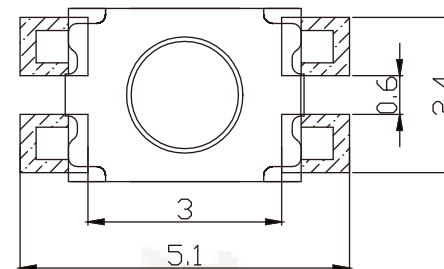
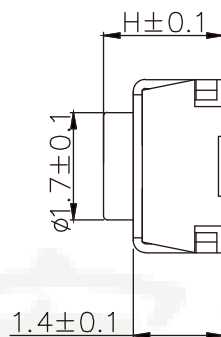
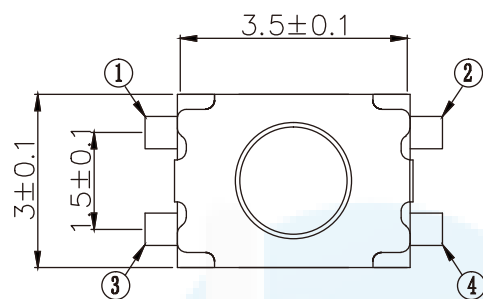
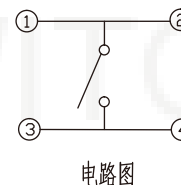
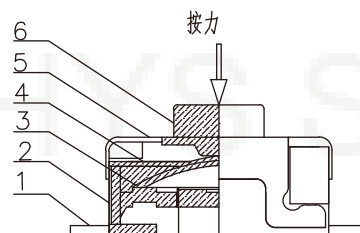
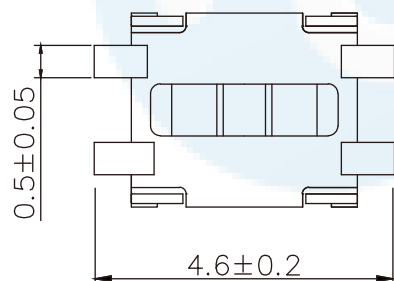


ROHS
Compatible



PCB 板焊盘尺寸



电路图

高度	PCS/盘
H=1.8mm	3000
H=1.87mm	4000
H=2.0mm	3000
H=2.5mm	3000

NO.	NAME	MATERIAL	FINISHING	SPECIFICATIONS							
1	TERMINAL	phosphorous bronze	Silver plating	Operating temperature rangs		-30° to +85°					
2	CASE	LCP	Black	Rating		DC 12V 50mA Max.					
3	CONTACT	SUS301	Silver plating	Contact Resistance		100mΩ Max					
4	Waterproof membrane	PI	Yellow	Dielectric strength		250V AC for 1min.					
5	COVER	SUS304	White	Travel		0.15 ± 0.1mm					
6	STEM	LCP	Black	Operating Force		1	2	3	4		
						100±30gf	130±30gf	160±40gf	260±40gf		
				Operating Life(cycles)		50,000		100,000		80,000	

DESIGN	Li Jinwei	SCALL	
DRAWING	Wu Qifa	UNIT	mm
CHECK	Zheng Jinxian	SIZE	A4: 210 * 297
APPROVAL	Liu Xiaohong	DATE	2020-06-10

⌀	
TOLERANCE	
.X: ±0.20	X': ±8°
.XX: ±0.10	.X': ±5°
.XXX: ±0.05	.XX': ±2°

DRAWG NO.	HYS-131
TITLE:	轻触开关小龟四脚贴片3*3.5*H



东莞市宏煜盛实业有限公司
Dongguan hongyusheng Industry Co., Ltd
TEL: 0769-81230179 <https://www.hystypec.com>