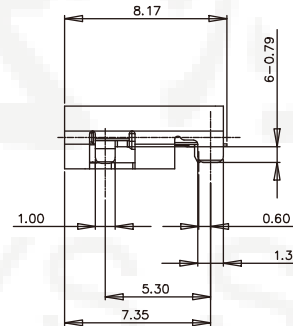
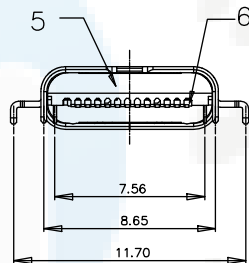
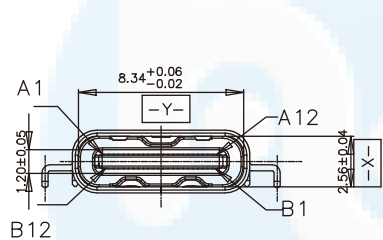
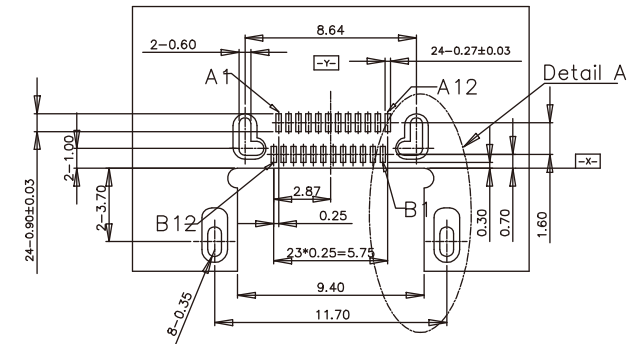
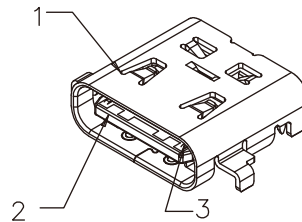
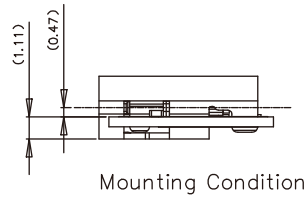
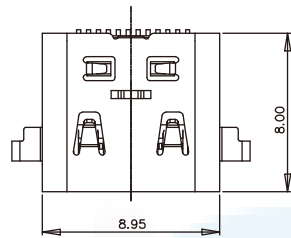
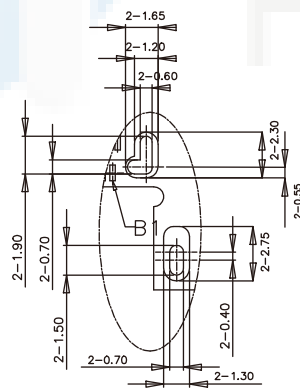
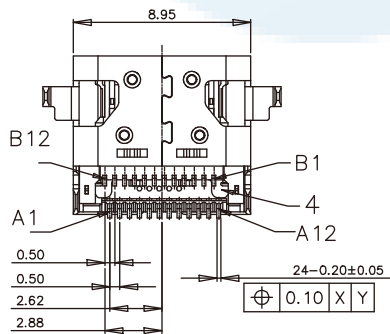


ROHS
Compatible



NOTES:

- Electrical characteristics:
 - Contact current rating:
 - A current of 5.0A shall be applied collectively to VBUS pins and 1.25A applied to the VCONN pin with the return path through the corresponding GND pins.
 - A MIN 0.25A shall be applied individually to all other contacts.
 - Contact resistance:
 - 40 Milliohms (MAX) initial for VBUS, GND and all other contacts.
 - Maximum change (delta) of +10 Milliohms after environmental stresses.
- Dielectric withstanding voltage : 100 V AC MIN (RMS).
- Insulation resistance: 100 MEGOHMS MIN.
- Mechanical characteristics:
 - Connector insertion force: 5~20N at a maximum rate of 12.5mm per minute.
 - Connector extraction force: 8~20N up to 1000 mating cycles, and 6~20N after the specified insertion/extraction or durability cycles at a maximum rate of 12.5mm per minute.
 - Durability: 10000 cycles minimum.
 - Operating temperature: -55°C TO +85°C
- The connector is Rohs compliant and halogen free compliant.



Item	Description	QTY.	Material	Finish	PIN ASSIGNMENT			
					Pin No.	Signal Name	Pin No.	Signal Name
6	Low IM	1	Thermo Plastic, UL94V-0	Molded Color: Black or White	A1	GND	B12	GND
5	Upper IM	1	Thermo Plastic, UL94V-0	Molded Color: Black or White	A2	TX1+	B11	RX1+
4	Shield plate	1	Stainless steel	Clean	A3	TX1-	B10	RX1-
3	Contact	24	Copper Alloy	Ni underplating overall, gold plating at contact area and termination.	A4	VBUS	B9	VBUS
					A5	CC1	B8	SBU2
2	Housing_IM	1	Thermo Plastic, UL94V-0	Molded Color: Black or White	A6	D+	B7	D-
					A7	D-	B6	D+
1	Shell	1	Stainless steel	Ni plating overall	A8	SBU1	B5	CC2
					A9	VBUS	B4	VBUS
					A10	RX2-	B3	TX2-
					A11	RX2+	B2	TX2+
					A12	GND	B1	GND

DESIGN	Li Jinwei	SCALL		 TOLERANCE X.X ±0.30 X.°±2° .XX ±0.20 .X°±1° .XXX ±0.10 .XX°±0.5°
DRAWING	Wu Qifa	UNIT	mm	
CHECK	Zheng Jinxian	SIZE	A4: 210 * 297	
APPROVAL	Liu Xiaohong	DATE	2020-06-10	

DRAWG NO. TYPE-C-CST24P080
TITLE: 24P沉板0.8四脚插板双SMT 带弹片 8.0L

东莞市宏煜盛实业有限公司
Dongguan hongyusheng Industry Co., Ltd
EL: 0769-81230179 <https://www.hystypec.com>