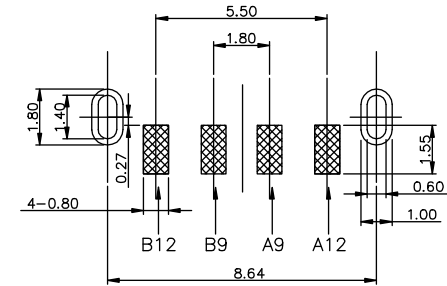
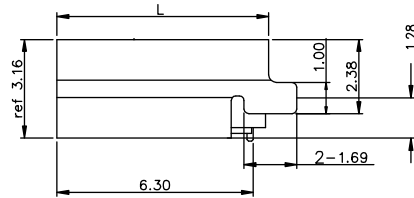
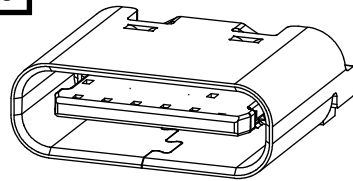
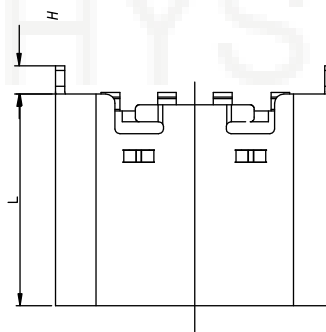
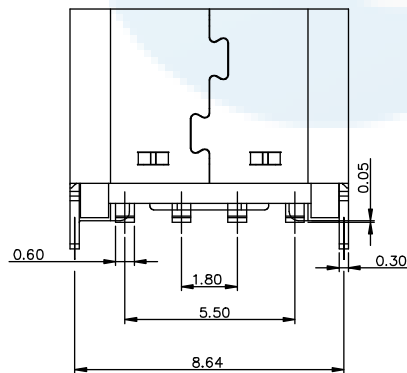
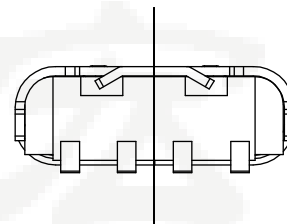
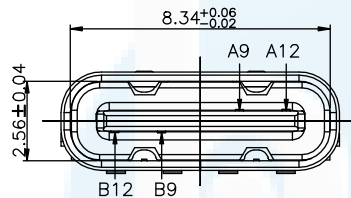


**ROHS**  
Compatible



RECOMMENDED P.C.B. LAYOUT  
TOLERANCE UNSPECIFIED ±0.05mm



NOTE:

- 1.MATERIAL SPECIFICATION:
  - 1.HOUSING:HIGH TEMPERATURE RESISTANT PLASTIC,UL94 V-0.
  - 2.CONTACTS:COPPER ALLOY
  - 3.MID PLATE: STAINLESS STEEL
  - 4.FRONT SHELL: STAINLESS STEEL
- 2.PLATING SPECIFICATION:
  - 2-1.CONTACTS:
    - Ni 50u" MIN. UNDER PLATED OVER ALL.
    - Au PLATED ON THE FUNCTIONAL AREA OF CONTACT.
    - (GOLD PLATING THICKNESS FOLLOW THE P/N)
    - PLATING SPECIFICATIONS OF THE SOLDER AREA FOLLOW THE P/N
  - 2-2.FRONT SHELL:
    - SEE TABLE1.
  - 2-3.SHIELD PLATE&EMI PLATE:
    - CLEAR ONLY
- 3.MECHANICAL PERFORMANCE,
  - 3-1.INSERTION FORCE: 0.5~2.0kgf.
  - 3-2.REMOVAL FORCE: 0.8kgf~2.0kgf.
  - 3-3.DURABILITY: 5000 CYCLES.
- 4.ELECTRICAL PERFORMANCE,
  - 4-1. CURRENT RATING: 3.0A  
VOLTAGE RATING: 5.0V
  - 4-2. LLCR:
    - VBUS & GND PINS AND OTHER PINS: 40mΩ/PIN MAX.
    - SHIELD: 50mΩ/MAX.
    - LLCR MAX. CHANGE OF ALL PINS: 10mΩ.
  - 4-3.INSULATION RESISTANCE: 100MΩ MIN
  - 4-4.DIELECTRIC WITHSTAND VOLTAGE,AC 100V FOR 1 MINUTE.
5. ENVIRONMENTAL PERFORMANCE:
  - OPERATING TEMPERATURE: -25°C~+85°C.
- 6.IR REFLOW:
  - THE PEAK TEMPERATURE ON THE BOARD SHALL BE MAINTAINED FOR 10 SECONDS AT 260°C.

PIN ASSIGNMENTS

|     |             |     |             |   |       |   |       |
|-----|-------------|-----|-------------|---|-------|---|-------|
| A9  | VBUS        | B12 | GND         |   |       |   |       |
| A12 | GND         | B9  | VBUS        | L | L=6.5 | H | H=0.9 |
| PIN | SIGNAL NAME | PIN | SIGNAL NAME | L | L=6.8 | H | H=1.5 |

|          |               |       |               |
|----------|---------------|-------|---------------|
| DESIGN   | Li Jinwei     | SCALL |               |
| DRAWING  | Wu Qifa       | UNIT  | mm            |
| CHECK    | Zheng Jinxian | SIZE  | A4: 210 * 297 |
| APPROVAL | Liu Xiaohong  | DATE  | 2020-06-10    |

|            |            |
|------------|------------|
| TOLERANCE  |            |
| .XX ±0.30  | .X° ±2°    |
| .XX ±0.20  | .X° ±1°    |
| .XXX ±0.10 | .XX° ±0.5° |

|           |              |
|-----------|--------------|
| DRAWG NO. | TYPE-C-LS04P |
| TITLE:    | 4P 立式贴片      |

 **东莞市宏煜盛实业有限公司**  
Dongguan hongyusheng Industry Co., Ltd  
TEL: 0769-81230179 <https://www.hystypec.com>