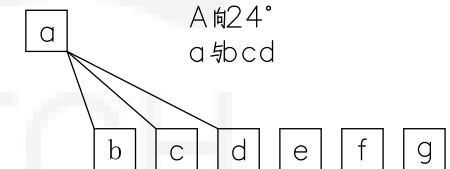
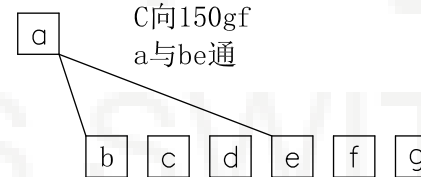
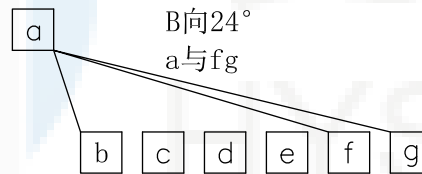
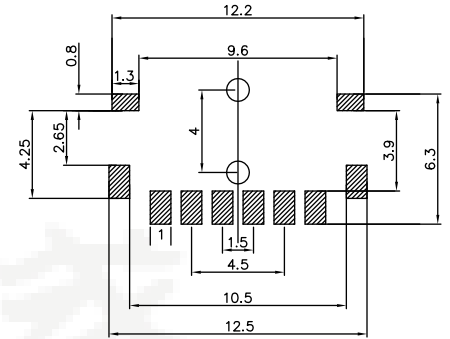
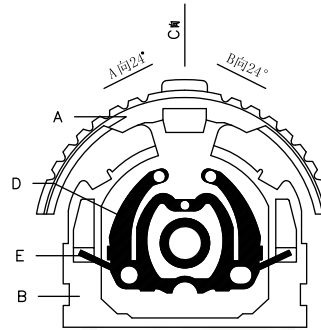
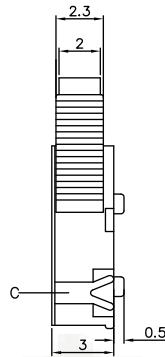
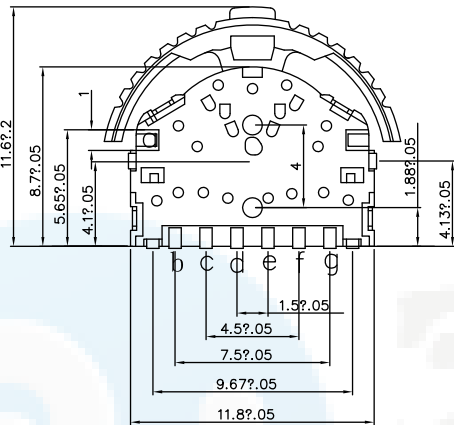
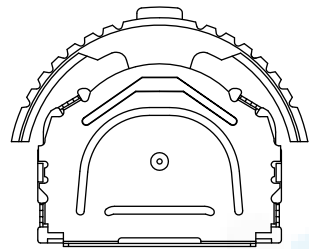


**ROHS**  
Compatible



项 目	标 准
电气性能	额定电流 Rated Current: 0.1A MAX
	额定电压 Rated voltage: DC 12V
	接触电阻 Contact resistance: ≤100mΩ
	绝缘电阻 Insulation Resistance: ≥100MΩ
机械性能	耐压强度 Compressive strength: AC110V 50Hz/1 min
	操作力度 Operating force: 2-80±50gf 205gf±50gf
	机械寿命 Mechanical life: 10,000 cycles Min
操作行程 Operation Stroke: 0.85±0.2mm	
环境性能	温度范围 Temperature Range: -30°C ~ +85°C

NO.	零件名称 Part Name	QTY	材料 Material	镀涂 Plating coating	颜色 colour	备注 Remarks
E	弹簧	1	SUS301	/	银白色	
D	接触簧片	1	复银铜	/	银白色	
C	盖板	1	SUS301	整体清洗	银白色	
B	底座/基座	1	PA46	/	黑色	
A	手柄	1	PA46	/	黄色	

DESIGN	Li Jinwei	SC ALL		⌀
DRAWING	Wu Qifa	UNIT	mm	TOLERANCE
CHECK	Zheng Jinxian	SIZE	A4: 210 * 297	X.X ±0.30 X.°±2°
APPROVAL	Liu Xiaohong	DATE	2020-06-10	.XX ±0.20 .X°±1°
				.XXX ±0.10 .XX°±0.5°

DRAWG NO.	FS-1501S-02
TITLE:	波轮开关

**东莞市宏煜盛实业有限公司**  
Dongguan hongyusheng Industry Co., Ltd  
TEL: 0769-81230179 <https://www.hystypec.com>